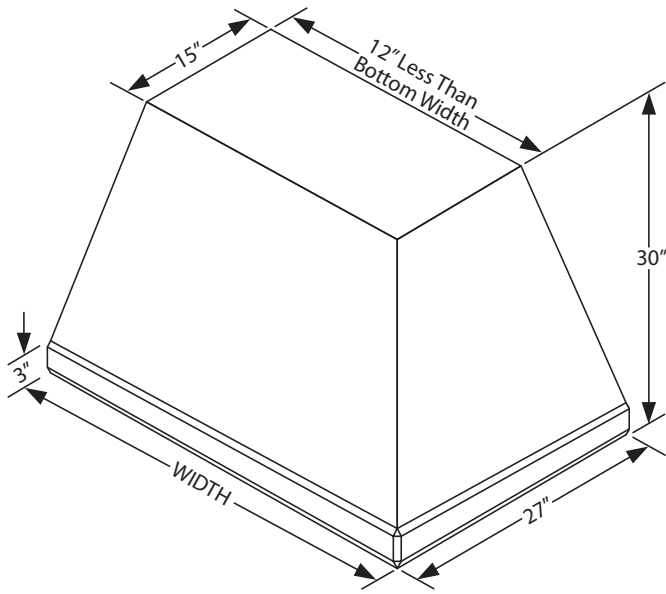
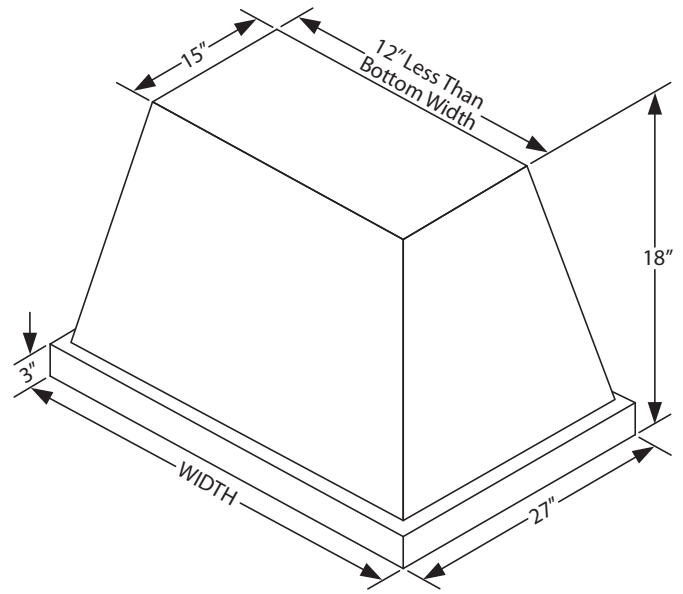


VentA Hood® ISLAND RANGE HOOD SPECIFICATIONS

ISL30/ISLH30/PY30/PYH30 "H" in part number indicates halogen lighting. These models not available with heat lamps.

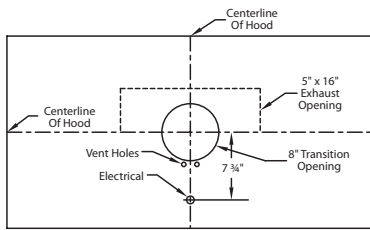


ISL30/ISLH30



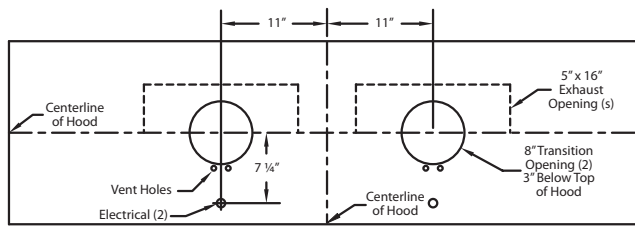
PY30/PYH30

Connection Diagram (36" - 54")



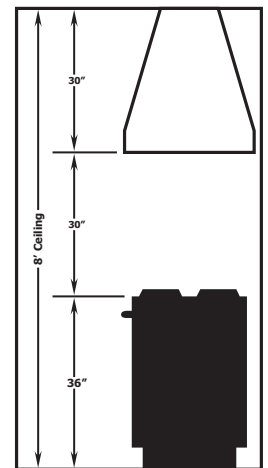
600 CFM T200 Dual Blower (Top View)

Connection Diagram (60" - 66")

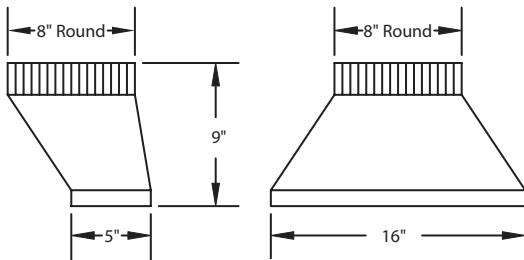


1200 CFM T2+ 200 Dual Blowers (Top View)

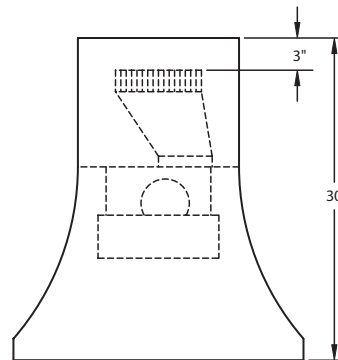
Recommended Mounting Height*



*Exceeding recommended mounting height may compromise performance.



VP565 Standard Transition (Included)



Transition Installed (Side View)

Electrical/Mechanical Specifications For Blower Units

Model	Volts	Amps ¹	RPM	CFM SP@0.0"	Equivalent CFM [#]	CFM SP@0.1"	CFM SP@0.2"	CFM SP@0.3"	Minimum Round Duct Size	Square Inches
T200 Island Dual	115	3.4	1550	600	900	572	540	480	8" (or equivalent)	50

¹Note: Add 0.5 amp for each halogen light. Hood is available with fluorescent lights (two for each dual blower) or with halogen lights (one in each corner).

[#]Because the Magic Lung[®] uses centrifugal filtration rather than conventional baffle or mesh filters, the Magic Lung[®] blower can handle cooking equipment with higher cubic feet per minute (CFM) requirements and can deliver equivalent CFM much more efficiently than other filtration systems. When comparing the Magic Lung[®] with other blower units made by other manufacturers, use the "Equivalent CFM".